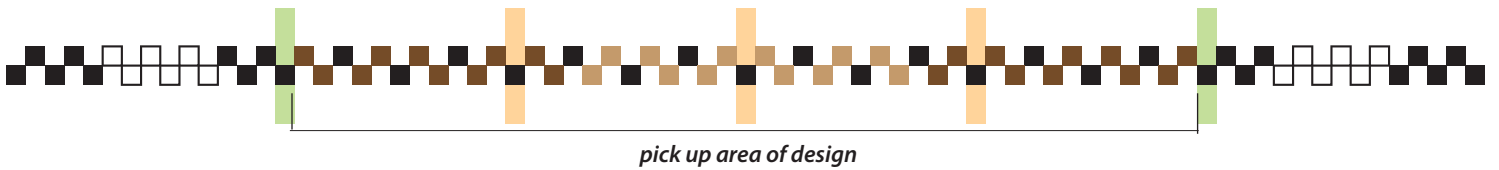


## Mud Cloth-inspired Inkle Pattern - Sally Orgren

### Warping Diagram



You will need 39 string heddles.

Use differently-colored string heddles for the 3 warps indicated (shown as orange).

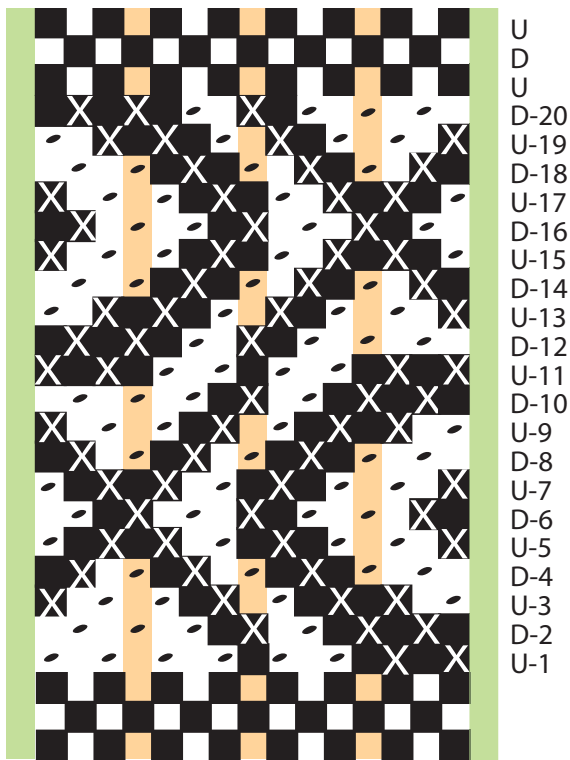
Use two green heddles to define the pick-up section of the warp.

This method helps you track your pattern easily when treadingling.

There are 75 total warps. (33 black, 20 dark brown, 12 light brown, 12 white.)

There are 15 pattern warps (dark blue) for the pickup design in the center of the band.

### Treadingling Diagram



### Treadingling Instructions for pattern pick-up

Only the central pick-up design is shown at left.

There are 20 picks in this pattern starting from the bottom. This is not a symmetrical pattern.

#### The key to the treadingling:

"U" = for this row, the warps are lifted UP

"D" = for this row, the warps are pressed DOWN.

#### The key to the pick-up:

"●" = the pattern thread which appears here needs to be pushed DOWN

"X" = the pattern thread needs to be lifted UP.

